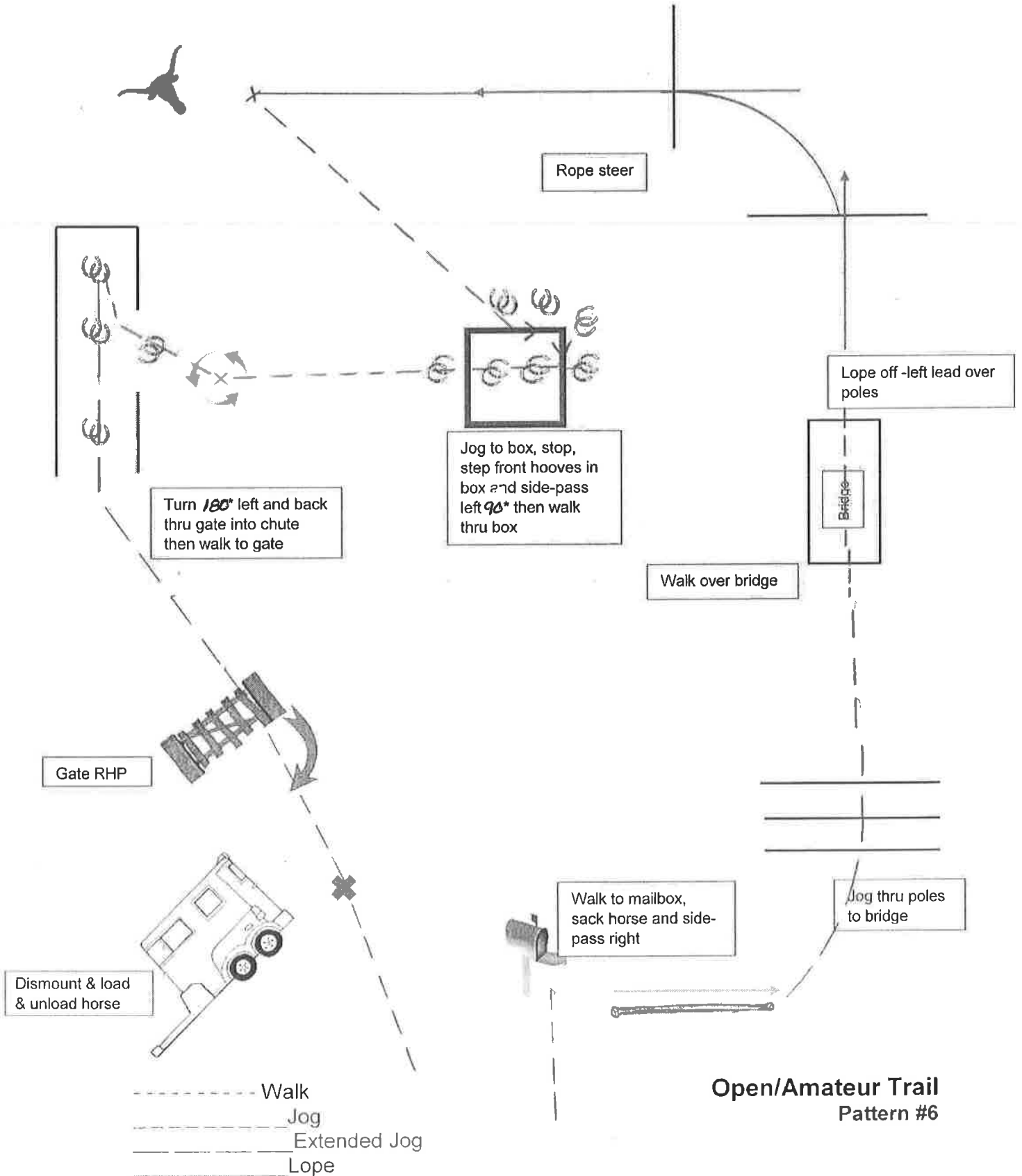


1. Enter, walk to mailbox & sack horse
2. Side-pass pole to right
3. Jog over poles to bridge
4. Cross bridge and pick up lope on left lead
5. Lope over poles to steer

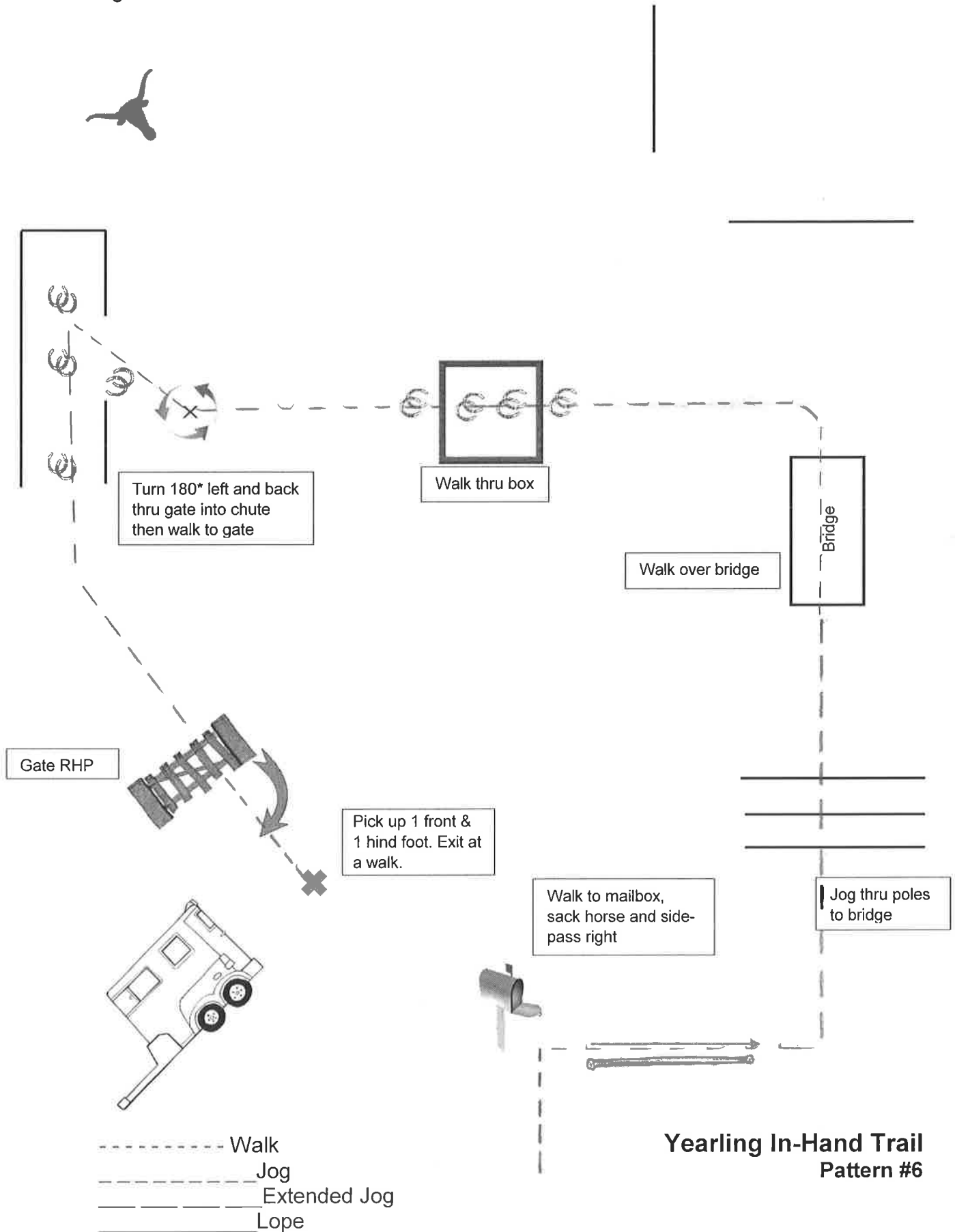
6. Rope steer and jog to box
7. Step front hooves into box and side-pass left 45°
8. Walk into & thru box to chute, pivot left & back into chute
9. Jog out of chute to gate & work gate RHP
10. Walk to trailer, dismount, load & unload-exit



**Open/Amateur Trail
Pattern #6**

1. Enter, walk to mailbox & sack horse
2. Side-pass pole to right
3. Jog over poles to bridge
4. Cross bridge and walk to box
5. Walk through box to chute

6. Pivot 180* left on haunches & back into chute
7. Jog out of chute to gate & work gate RHP
8. Walk to trailer, pick up one front & one hind hoof
9. Exit at a walk



1. Enter, walk to mailbox & sack horse
2. Side-pass pole to right
3. Jog over poles to bridge
4. Cross bridge and jog to box
5. Walk through box to chute

6. Pivot 180* left on haunches & back into chute
7. Jog out of chute to gate & work gate RHP
8. Walk to trailer, pick up one front & one hind hoof
9. Load & unload from trailer & exit at a walk

