

# WRHA ROUNDUP

WWW.WISCONSINRANCHHORSE.COM



Spring 2026



## Farewell 2025, Hello 2026

Thank you to all who attended the **2025 WRHA Awards Banquet** at Cotton Exchange on February 28<sup>th</sup>! The food was delicious, the company was great, and the awards were stunning. And how cool were those WRHA portfolio table gifts?!

A huge **CONGRATULATIONS** to all WRHA members on your many achievements in 2025 – the competition was fierce!



Special **THANK YOU** goes to the WRHA Board of Directors, volunteers, supporters, and all those who helped make this banquet spectacular – these events wouldn't be possible without you.

Lastly, **THANK YOU** to all who donated items to our raffle, silent auction, and live auction – together we raised over \$2000 for the WRHA Youth!

## 2026 WRHA Board

### Officers

President: Ellen Hebron  
Vice President: Natalie Derry  
Treasurer: Debra Brown  
Secretary: Ashley Gorczynski

### Board Members:

Sarah Lidicker  
Kaitlyn Yeadon

### Past President:

Jo Ellen Milkie

 *Stay Connected with Us*

[www.Facebook.com/  
WisconsinRanchHorseAssociation](https://www.facebook.com/WisconsinRanchHorseAssociation)



# THINK *inside* the Box.

Designed by a horse owner for other horse owners, and all stable dwellers, HEYBOX is a compact, multi-purpose hub for storage, exchange, and communication—a modern convenience built for barn and stable environments.



See how  
it works in  
the barn!

[theheybox.com](http://theheybox.com)



Made in the USA.

## WRHA Memberships

***Have you submitted your 2026 WRHA membership application yet?***

- *Single, Family, & Youth memberships available* ▪

Printable membership form is available on **page 15**.

...or join using credit card payment **here**

### ***Returning for 2026!***

Choose how you want to receive your membership card:  
email or post mail!



Please help us ensure a smoother office experience by joining or renewing **BEFORE** the first show. This will allow the WRHA secretary enough time to process & send your membership card.



All horse owners & exhibitors **must** be a current WRHA member in order to compete at a WRHA show.



## 2026 SHOW DATES

May 15-17

June 26-28

August 7-9

September 25-27



Walworth County Fairgrounds  
Elkhorn, WI

# 2026 Show Updates

## General

- Now a 3-day show (starts Friday at 12pm).
- Exhibitors may arrive Thursday after 3pm.
- WRHA has the entire equestrian center for all 4 shows (plenty of camping hook-ups!)
- Pre-entries & stall/camping reservations will open approximately one month before each show. They will close at 7pm on the Sunday prior to each show.

## Arenas

- Cattle classes will be held in Arena #2.
- 2 arenas will run concurrently on Saturday and 1 arena on Friday & Sunday.
- Saturday dry work arena will be run as 'working order with flexibility' - no longer running 'at will'.

## Class Updates

- All Age Herd Work, Ranch Reining, & Ranchmanship classes have been split into Jr. Horse & Sr. Horse classes
- Reining classes (AA, Am, Youth) & Youth Cutting have been removed.

## Award Updates

- All Age division awards will be split into Jr. Horse & Sr. Horse for Weekend High Point, Year End High Point, Year End Top Cow Horse, & Year End Top Performance Horse - that's FIFTEEN additional awards for 2026!

## Special Events

- 2 Year-Old Challenge returning for 2026 - more details to come!

## Green As Grass & Green Horse Declaration Forms

- If you plan on showing in any Green As Grass and/or Green Horse classes this year, you must sign a declaration form to confirm your eligibility before your first show. This is similar to the declaration form that ARHA requires for Amateur & Novice exhibitors.
  - [Link to ARHA Amateur & Novice Declaration Form](#)
  - [Link to WRHA Green As Grass Declaration Form](#)
  - [Link to WRHA Green Horse Declaration Form](#)

# Trusted by Riders, Backed by Experience

Be prepared for the unexpected with **USRider®** – 24/7 Nationwide Roadside Assistance that covers you and your truck, trailer, and horse!



**SIGN UP NOW AND STAY PREPARED.**

Thousands of equestrians trust USRider for emergency roadside assistance. Join a community of riders who travel smarter and safer.



**USRider's 24/7 nationwide roadside assistance coverage includes:**



COVERAGE FOR ANY VEHICLE OUR MEMBERS ARE TRAVELING IN



COVERAGE FOR TOW VEHICLES & TRAILERS W/HORSES



COVERAGE FOR DUAL-WHEELED VEHICLES



EMERGENCY VET/STABLING/FARRIER REFERRALS



BATTERY ASSISTANCE



FUEL DELIVERY

**...AND MORE!**



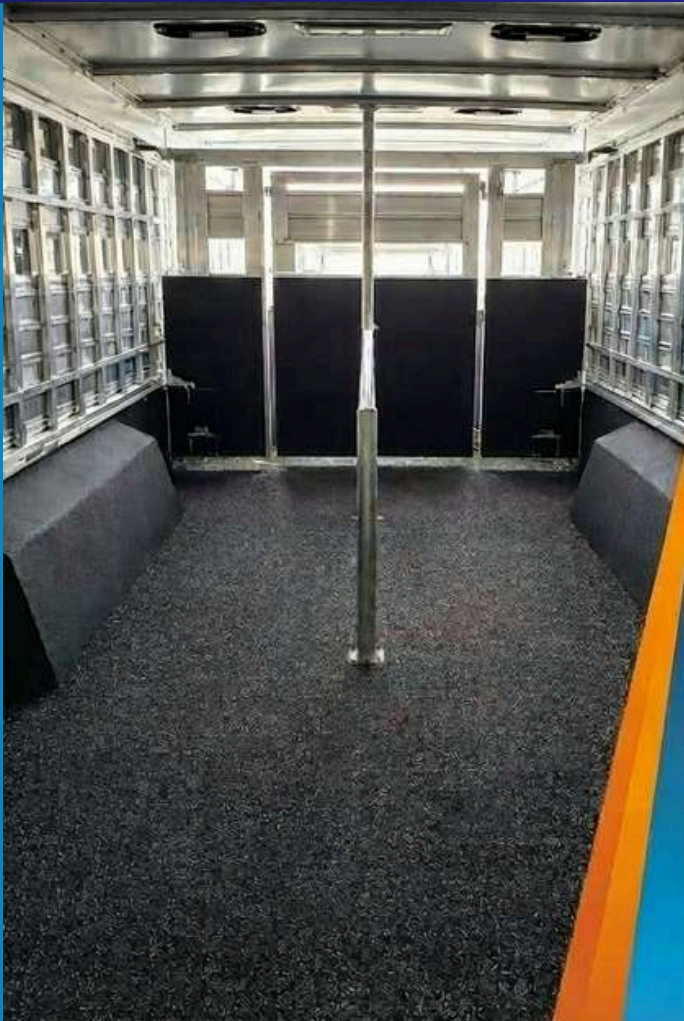
*Show season is almost here!  
Are you ready?*



- ✓ ARHA membership (owner & exhibitor)
- ✓ ARHA certificate of eligibility (horse)
- ✓ WRHA membership (owner & exhibitor)
- ✓ Coggins papers
- ✓ 30-Day Health Certificate (out of state horses)



Get your paperwork in order now to ensure  
a smooth check-in at the show office  
& avoid any rush fees!



WE ELIMINATE RUBBER MATS!

Long Lasting Solutions to Keep Your  
Truck & Trailer Going the Distance

- ✓ Completely Seals Floor
- ✓ Slip-Resistant Surface
- ✓ Easy to Clean
- ✓ Won't Crack or Chip

**815-455-0123**

Sales@GreatLakesCustoms.US  
www.GreatLakesCustoms.US  
Prairie Grove, IL




Scan to vKit  
US Online



N4467 Laatsch Lane  
Jefferson, WI 53549



 [RandallTackandRepair.com](http://RandallTackandRepair.com)

 262-470-7373

# PATTERN BOOKS

*Order yours today!*

## INCLUDES ALL PATTERNS FOR:

-  Spring Showcase (May 15-17)
-  Slidin' Into Summer (June 26-28)
-  Beat The Heat (August 7-9)
-  Fall Roundup (September 25-27)

- Mailed directly to you!
- 5.5" x 8.5" books, 52 pages each
- All proceeds go toward hospitality at WRHA shows.

 Order forms available at:  
[www.WisconsinRanchHorse.com/Shows](http://www.WisconsinRanchHorse.com/Shows)

**WRHA**  
WISCONSIN RANCH HORSE ASSOCIATION 



**\$15 each  
shipped**



# **SPONSORSHIP** *opportunities*

THE WISCONSIN RANCH HORSE ASSOCIATION IS PROUD TO OFFER FAMILY-FRIENDLY, FUN & AFFORDABLE EVENTS FOR ALL RANCH HORSE ENTHUSIASTS - AND WE CAN'T DO IT WITHOUT PARTNERS LIKE YOU!

## **BENEFITS INCLUDE:**

- SHOW ANNOUNCEMENTS
- NAME/LOGO ON SPONSOR TABLE DISPLAY
- SOCIAL MEDIA PROMOTION
- LOGO/LINK ON WRHA WEBSITE SPONSOR PAGE
- BROCHURES/FLYERS ON SPONSOR TABLE DISPLAY
- AD SPACE IN QUARTERLY NEWSLETTER
- BANNER SPACE AT SHOWS
- LOGO/LINK ON WRHA WEBSITE HOMEPAGE
- COMPLIMENTARY VENDOR SPACE AT SHOWS

**BECOME A SPONSOR & HELP US  
MAKE THIS SHOW SEASON  
UNFORGETTABLE!**

## **CONTACT US:**

Ashley Gorczynski, Sponsorship Chairman

☎ (815) 280-3002

✉ [ashley.trausdale87@gmail.com](mailto:ashley.trausdale87@gmail.com)

🌐 [www.WisconsinRanchHorse.com](http://www.WisconsinRanchHorse.com)



## *2026/2027 ARHA Rulebook*



**Did you know that it's a new rulebook year?**

**If you haven't read the new rulebook yet, be sure to review it before your first show this year!**

**Updates include but are not limited to:**

- **Horse age restrictions for all classes**
- **Grabbing saddle horn is now allowed in all classes**
- **Time limit removed for Working Ranch Horse**
- **Updated ARHA fees**
- **Restructured penalties in various classes**
- **and more!**



**<https://americanranchhorse.net/forms>**



Chic Dreamin



**Chic Dreamin**

**Chic Dreamin**

2012 Sorrel Stallion  
MAGNUM CHIC DREAM X SKEETS RED DUNIT  
AQHA 6 panel N/R, Stallion height: 14.3 Hands

MAGNUM CHIC DREAM	SMART CHIC OLENA	SMART LITTLE LENA	GAY SUGAR CHIC
SKEETS RED DUNIT	TOPSAIL COOY	MRS SARTIC BURBEE	PEPPY SARI RAGDOR
BRENNA'S RED DUNIT	WOLLYWOOD DUNE IT	BE ACHYS BRENNAL	

**Career Highlights LTE: \$265,421**

- 2018 REINING BY THE BAY OPEN DERBY CHAMPION
- 2018 NRHA OPEN DERBY 4TH PLACE
- 2017 AQHA WORLD CHAMPION JUNIOR REINING
- 2017 NRHA OPEN DERBY 4TH PLACE
- 2017 NRBC OPEN DERBY CHAMPION
- 2016 NRBC INTERMEDIATE OPEN DERBY CHAMPION

*First limited foal crop produced  
multiple NRHA money-earners  
in their Futurity year*

2025 REGULAR FEE: \$2,000  
includes booking fee \$500



OKLAHOMA  
2868 20th Street, Purcell, OK 73080, USA  
RANCH PHONE: 405-600-1900 • RANCH FAX: 405-608-8008  
Breeding Inquiries: Chick@SilverSpursOklahoma.com



**SIRE:** MAGNUM CHIC DREAM (1996), \$44,294 and 100 AQHA points; AQHA World Champion Senior Reining Horse; NRHA Limited Open Futurity Reserve Champion; Superior Reining. A 2017 RGP #2 Leading Sire of Ranch Riding money-earners; 2017 & 2018 RGP Top 5 Leading Sire of Reining money-earners; 2017 & 2018 AQHA Top 5 Leading Sire of Reining Point Earners; 2008 AQHA Top 5 Leading Sire of Ranch Riding Point Earners. Sire of 805 RGP money-earners, \$12,770,780, earners of 13,740 AQHA points, including MR FARENHEIT (\$380,897-2/3 NRHA Futurity L4 Open), CUSTOM DREAMS (\$281,331, Reserve Champion 100X Cowtown Classic Reining 4YO Stakes L4 Open), MS DREAMY (\$201,640 and 83 AQHA points; Run For A Million Reining Challenge Open 5th place, NRBC Derby Non-Pro Reserve Champion), CHIC DREAMIN (\$265,421, NRBC Open Derby Champion), CUSTOMIZE MY DREAM (\$237,471, NRHA Futurity L4 Open Reserve Champion), DREAM ON WIND (\$217,409, NRHA Derby L3 Open Champion) MADE BY MAGNUM (\$204,170; split 3rd NRHA Int. Open Futurity), TANS DREAMER (\$200,000 and 1955 AQHA points; NRBC Non-Pro Derby Champion; Superior Reining), MEGA MAGGIE MAE (\$196,631; NRHA Non-Pro Futurity Reserve Champion), THREE AMERICAN DREAM (\$189,984; NRHA Futurity Open Level 4 Finalist)

**DAM:** SKEETS RED DUNIT (2007); A Leading Producer; Dam of 8 AQHA foals, 4 money-earners, \$330,776, including CHIC DREAMIN (\$224,394 and 24 AQHA points; NRBC Open Derby Champion), AQHA World Champion Junior Reining Horse, Reining by the Bay Open Derby Champion), MAGNUM CHIC DUNIT (\$42,184; Reining in the NRHA Open Futurity; Finalist in the Congress Open Reining Futurity, Finalist in the NRHA Int. Open Derby)

**PERFORMANCE RECORD:** CHIC DREAMIN Earner of \$262,273. In 2015, split 3rd Rocky Mountain RHA Summer Slide Stallion Stakes Futurity Go Open Champion; split 3rd Rocky Mountain RHA Summer Slide Futurity Go Open Champion, NRHA Futurity Youth Non-Pro Champion; in 2016, NRBC Int. Open Derby Champion; 7th NRBC Open Derby, 4th High Roller Reining Open Classic; Stakes: Top 10 NRBC Derby Preliminary Open, 3rd NRBC Derby Preliminary Int. Open; in 2017, NRBC Open Derby Champion; AQHA World Champion Junior Reining Horse; split 4th NRHA Open Derby; split 3rd NRBC Derby Preliminary Open; split 7th High Roller Reining Open Classic Derby, NRHA Derby Preliminary Open Champion; AQHA World Junior Reining Level 2 qualifier; in 2018, Reining by the Bay Open Derby Champion; split 4th NRHA Open Derby; split 4th High Roller Reining Open Classic Derby; in 2019, The Run For A Million Reining Invitational Open 12th, in AQHA competition

**TOP 5 OFFSPRING**

- 1 SS SUPA FLY \$10,400  
Champion Big Sky Reining Classic 4YO Stallion Stakes Derby L4 Open
- 2 CONQUISTADOR DREAMIN \$1,206  
5/8 All Star Reining Stakes Futurity L1 Open
- 3 CHICS BE DREAMIN \$2,256  
1/2 NRBC Reining Novice Horse Non-Pro L3 CLZ
- 4 SEEK N DREAMS \$887  
1st Rocky Mountain RHA Summer Slide Futurity L1 Open
- 5 SS STARLIGHT DREAMIN \$225  
7th N/American Reining Stakes Futurity L1 Open

Electric Wind



**Electric Wind**

2019 AQHA WORLD CHAMPION SENIOR REINING

**Electric Wind**

2012 Sorrel Stallion  
JACS ELECTRIC SPARK X WIND HER UP CHIC by SMART CHIC OLENA  
AQHA 6 panel N/R, Stallion height: 14.3 Hands

JACS ELECTRIC SPARK	BRENNAN DOC	DIAMONDS SPARKLE
WIND HER UP CHIC	MISSE HELLO HOLLYWOOD	HOLLYWOOD JAC IN MISSE DOLL PRIDE
	SMART CHIC OLENA	SMART LITTLE LENA
	WIND HER UP DOC	DOC'S BITEWINDER

**Career Highlights - LTE: \$18,617**

- 2019 AQHA WORLD CHAMPION SENIOR REINING
- 2019 RESERVE CHAMPION SWIRLA WINTER SLIDE CXL 4 OPEN DERBY
- 2019 CHAMPION SWIRLA WINTER SLIDE CXL 3 OPEN DERBY
- 2018 3RD PLACE OKHA RD/SLD NOVICE HORSE OPEN DERBY
- 2018 14TH PLACE OKHA RD/SLD OPEN DERBY
- 2017 6TH PLACE WILD CARD REINING CHALLENGE 4YO OPEN STKS
- 2017 13TH PLACE CACTUS CLASSIC OPEN DERBY
- 2016 3RD BUCKEYE OPEN REINING FUTURITY
- 2016 20TH CONGRESS REINING OPEN FUTURITY
- 2016 2ND PLACE NRHA FUTURITY GOT OPEN

**2019 AQHA WORLD CHAMPION SENIOR REINING**

OLDEST FOALS BORN 2021

2025 REGULAR FEE: \$1,400  
includes booking fee \$500



ARIZONA  
1848 E GUAY TRACK ROAD, SCOTTSDALE, ARIZONA 85262  
PHONE: 480-863-8186 • FAX: 480-863-2150  
All Breeding and Sale Horse Inquiries: AZ@fcg@SilverSpursOklahoma.com



**SIRE:** JACS ELECTRIC SPARK (1998), \$81,947 and 38 AQHA points; Finalist NRBC Open Derby twice; ROM. A sire of 330 money-earners, \$4,076,376, and earners of 4,706 AQHA points, including ELECTRIC CURE (\$275,432 and 25.5 AQHA points; 3rd NRHA Open Futurity), REF BUCK MAMMA (\$22,871; 4th NRHA Open Futurity), HOLIER THEN THOU (\$24,432; split 9th NRHA Open Futurity), ELECTRIC CHA CHING (\$12,520; NRHA Int. Open Derby Champion), STEPPIN ON SPARKS (\$108,960 and 53.5 AQHA points; Congress Junior Reining Open Champion, Superior Reining).

**1ST DAM:** WIND HER UP CHIC by Smart Chic Olena. Earner of \$102,771; 2006 NRHA Open Futurity 7th place; 2006 RMFHA Summer Slide Open Futurity Finalist; 2007 NRBC Open Reining Classic 4th Place; 2007 NRHA Open Derby 3rd place; 2008 NRBC Open Reining Classic Finalist; 2008 NRBC Open Reining Classic Third Highest Scoring Mare; The 2022 QReita #2 Leading Dam of Reining Money-Earners and the 2021 NRHA #3 Leading Dam. Dam of 31 AQHA foals age 3 & over, 23 money-earners, \$1,000,000+, including:

- BERSEY'S BABY DRIVER (c. by Yellow Jersey), \$250,253; NRHA Open Derby Champion; NRBC Level 4 Open Derby Champion.
- WINDING INFERNO (c. by Inferno Sixty Six) \$103,038; 2nd The Invitational Reining Futurity L4 Open
- STARFIRE SIXTYSIX (c. by Inferno Sixty Six) \$78,654; 6/8 NRHA Derby 4YO Stakes L4 Open
- WIMPY'S SIDEWINDER (c. by Wimpys Little Steg), \$67,751 & 86 AQHA Reining points; Finalist, 2019 NRBC L4 Open Derby; Finalist, NRHA Open Futurity; top 10, High Roller Reining Classic Intermediate Open Derby; AQHA High Point Junior Reining Horse; Superior Reining.
- GUNNERS CHIC MAGNET (AQHA APHA), (c. by Colonel's Smoking Gun), \$65,678; Euro Limited Open Derby Champion, 4th in the Intermediate Open; NRBC Derby Non-Pro class Co-Champion; split 4th, Heritage Open Reining Futurity.
- SILVER WHIZKEY SHOT (c. by Dun It For Whiskey), \$45,648; Reining by the Bay Level 3 Open Derby No. 1 Reserve Champion, 4th Level 4 Open.
- WIND UP WHIZ KID (c. by Topsail Whizz, \$43,523; 4th Congress Open Reining Futurity, top 10 NRBC L4 Non-Pro Derby; split 3rd NRBC Derby L3 Non-Pro, 3rd Arizona High East Of The West L4 Open Derby.
- WOUND UP WIMP (c. by Wimpys Little Steg), \$42,750 and 46 AQHA points; Finalist NRHA L3 Open Futurity 6th AQHA World Senior Reining; Finalist NRHA L3 Non-Pro Derby; Open Post ROM; Dam of XTRA VOOODOO DR (\$40,011).
- CHICS NITE (c. by Gunners Special Nite), \$38,854; NRHA Non-Pro World Champion, NRHA Derby 8 & Up; Maturity L4 Non-Pro Champion; Clayton Classic Reining Derby L2 Non-Pro Reserve Champion.
- OPTIMUS PRIME (c. by Nic 8 in the Bud), \$27,389 and 14 AQHA points; NRHA Junior Youth World Champion, Finalist NRHA Open Futurity.
- ELECTRIC WIND (c. by Jacs Electric Spark), \$18,617 and 48 AQHA points; AQHA World Champion Senior Reining Horse, AQHA Reserve High Point L2 Open Junior Reining Horse.
- GUNNERS NITE SLIDER (c. by Gunners Special Nite), \$14,899; European NRHA Non-Pro Futurity Reserve Champion, 5th Italian RHA Non-Pro Futurity, 4th European NRHA Derby L2 Non-Pro.
- WOUND UP WHIZ (c. by Topsail Whizz), \$14,093; Finalist European NRHA Open Futurity, Poland Rolecki Spin Reining 4-Year-Old Open Futurity Co-Reserve Champion.



# CINCH

JEANS & SHIRTS



**THERE'S NO LUCK WHEN YOU CHOOSE THE BEST!**


**Finish Line**  
HORSE PRODUCTS


**GUARANTEED TO WORK OR YOUR MONEY BACK!**

- Western Apparel
- Boots
- Saddles
- Tack
- & more!



 East Troy, WI

 (262) 642-4272

 [Shop.West20.com](http://Shop.West20.com)

Youth obtain sponsorship money for lessons


**WRHA YOUTH**

# SPONSORSHIP PROGRAM

Now in it's 3<sup>rd</sup> year!



WRHA matches dollar-for-dollar up to \$150

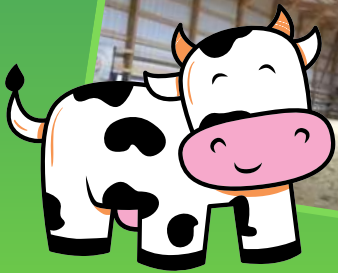
 [www.WisconsinRanchHorse.com/Youth](http://www.WisconsinRanchHorse.com/Youth)

# *Youth & Green As Grass Clinic*

Thank you to everyone who joined us on Saturday, March 14<sup>th</sup> at Hardwood Ridge Farms for the Youth & GAG Clinic!

A special THANK YOU to Natalie Derry, Roger Lindeman, Hardwood Ridge Farms, & the WRHA Board for a fun & educational event!

Next clinic is Saturday, March 28th!  
For more information, contact Natalie at 920-723-9131.



**PREMIUM EQUINE GROOMING PRODUCTS**



# Zarasyll<sup>®</sup>

Revolutionary Science For Animal Skincare.  
Recommended By Veterinarians.



**WRHA**  
WISCONSIN RANCH HORSE ASSOCIATION

**2 YEAR-OLD  
CHALLENGE**

**BACK FOR  
2026**

✨ **MORE DETAILS COMING SOON!** ✨



**2025 Champion**  
**Dunnit With My Banjo**  
owned & shown by Natalie Derry



**2025 Reserve Champion**  
**GP Olena Oaks Chic**  
owned & shown by Linda Pfalzgraf



MARTINA TONELLO Photography



# HVQ *Bill Cody*

- AQHA 2x high point award
- 11x AQHA World Show top-ten open finalist
- 3x AQHA World Show Superhorse Contender
- AQHA World Show 32x class Qualifier
- 6x AQHA grand champion halter awards
- AQHA roping superiors heading, heeling and tie-down
- Lifetime earnings > \$30,000
- AQHA 2023 World Show third place bronze Sr Open Heading & Open Breakaway

## Taking Breeding Reservations

**Breeding Fee:** \$1,200 + shipping / collection fee (estimated \$375)

AI / Cooled shipped semen

Multiple mare and performance mare discounts

6-Panel NN - Color Test results available

*Standing at:*

**Bryant Ranch, LLC | Jay, OK**

Kim Bryant | 479-866-1185 | [KimBryant7771@gmail.com](mailto:KimBryant7771@gmail.com)

*Proudly Owned By:*

Brent & Kelly Johnson, HVQ Farms | 715.299.8911 | [BRFhunt2@gmail.com](mailto:BRFhunt2@gmail.com)





# Wisconsin Ranch Horse Association

## ★ 2026 Annual Membership ★

[www.WisconsinRanchHorse.com](http://www.WisconsinRanchHorse.com)

Note: Memberships are valid from January 1 – December 31, 2026

Is this a new membership or renewal?  New  Renewal

How would you like to receive your WRHA card?  Email  USPS Mail

Name (as it appears on ARHA card): \_\_\_\_\_

Address: \_\_\_\_\_

City: \_\_\_\_\_ State: \_\_\_\_\_ Zip: \_\_\_\_\_

ARHA # \_\_\_\_\_ WRHA # (for renewals) \_\_\_\_\_

Phone: ( ) \_\_\_\_\_ Email: \_\_\_\_\_

\*\*\*Email must be included & legible to receive voting ballots, newsletters, & important charter updates\*\*\*

- Single Membership: \$15 (*Adults 19 years-old & over*)
- Family Membership: \$25 (*Two Adults & All Children 18 & Under \*19 yrs & over require own membership\**)
- Youth Membership: \$10 (*Youth 18 years-old & under*)

Please list all youth member's name and birthdates:

Name:	Birthdate:
_____	_____
_____	_____
_____	_____
_____	_____

Please make check payable to "WRHA" & mail to:  
WRHA c/o Ashley Gorczynski, 233 Esprit Court, Bloomingdale, IL 60108

Have a question about memberships?  
Email Ashley at [wrhasecretary@gmail.com](mailto:wrhasecretary@gmail.com)

For office use only:

Date membership received: \_\_\_\_\_ Membership card sent: \_\_\_\_\_

Check #: \_\_\_\_\_ Amount: \_\_\_\_\_ WRHA membership # \_\_\_\_\_



# 2026 WRHA Sponsorship Form

Please fill out form & mail/email to:

WRHA  
 c/o Ashley Gorczynski  
 233 Esprit Court  
 Bloomingdale, IL 60108

ashley.trousdale87@gmail.com

	Friend of WRHA (\$25-\$49)	Bronze Sponsor (\$50-\$149)	Silver Sponsor (\$150-\$249)	Gold Sponsor (\$250-\$499)	Platinum Sponsor (\$500-\$999)	Premier Sponsor (\$1000+)
Announcements at WRHA Shows	★	★	★	★	★	★
Name/Logo Displayed at Sponsor Table	★	★	★	★	★	★
Promotion on WRHA Facebook Page		★	★	★	★	★
Logo/Link on Sponsor Page of WRHA Website			★	★	★	★
Business Literature on Display at Sponsor Table (sponsor to provide literature)			★	★	★	★
Ad Space in WRHA Quarterly Newsletter				★ 1/2 page	★ 1/2 page	★ full page
Banner Space at WRHA Shows (sponsor to provide banners)				★ Up to 2 banners	★ Up to 3 banners	★ Up to 3 banners
Logo/Link on Homepage of WRHA Website					★	★
Complimentary Vendor Space at WRHA Shows						★

All 2026 WRHA sponsorships are valid through December 31, 2026.

∞ Please Select Sponsorship Level: ∞

- Friend of WRHA (\$25-\$49)
  Bronze Sponsor (\$50-\$149)
  Silver Sponsor (\$150-\$249)
  Gold Sponsor (\$250-\$499)
  Platinum Sponsor (\$500-\$999)
  Premier Sponsor (\$1000+)

∞ Sponsorship Amount: ∞

Please make checks payable to "WRHA"

Monetary \$ \_\_\_\_\_ In-Kind Donation (Product Value) \$ \_\_\_\_\_

Business Name: \_\_\_\_\_

Contact Name: \_\_\_\_\_

Address: \_\_\_\_\_

City, State, Zip: \_\_\_\_\_ Contact Phone #: \_\_\_\_\_

Contact Email: \_\_\_\_\_

Why you chose to support WRHA: \_\_\_\_\_

\_\_\_\_\_  
 \_\_\_\_\_

∞ Interested in a custom sponsorship package? ∞  
 Contact us with your proposal!



**Wisconsin Ranch Horse Association**  
**• 2026 Show Series •**  
**Walworth County Fairgrounds, 411 E. Court St., Elkhorn, WI 53121**



Know Before You Show

► **Spring Showcase - May 15-17**

Fri/Sat Judges: Louise Keen, Angie Reichert  
 Sat/Sun Judges: Jim Gibby, Kim Smith

► **Beat The Heat - August 7-9**

Fri/Sat Judges: Coleen Martin, Pete McAlister  
 Sat/Sun Judges: Terry Myers, Julie Usoff

► **Slidin' Into Summer - June 26-28**

Fri/Sat Judges: Tania Morton, Trevor Walton  
 Sat/Sun Judges: Jesse Walker, Courtney Wiedenmann

► **Fall Roundup - September 25-27**

Fri/Sat Judges: Ernie Dowell, Leslie Fluhr  
 Sat/Sun Judges: William Butler, Butch Fluhr



Awards Program

► **WRHA Membership required for all horse owners & exhibitors to show.** ARHA membership & horse certificate of eligibility required for ARHA classes. Negative 12-month Coggins required for all horses. Original 30-day health certificate required for out-of-state horses. Ages as of Jan 1, 2026. ARHA rules to apply. Refer to "Know Before You Show" document on WRHA website for information on show requirements. Judges' decisions are final. No refunds. A signed check or cash must be on file with the office before showing. \$50 NSF charge will apply. **Class Symbols:** \* denotes cattle class. † denotes non-ARHA classes (no ARHA points given). **Green as Grass (GAG), Green Horse (GH), & Walk-Trot Restricted:** Refer to "Know Before You Show" for eligibility information.

► **RETURNING FOR 2026: WRHA 2 Year-Old Challenge:** Refer to WRHA website for details.

► **WRHA Awards Program:** WRHA offers Weekend & Year-End Awards. Weekend High Point (Grand & Reserve) awarded in 6 divisions. Refer to "WRHA Awards Program" document for more information.

► **Pre-Entries:** Pre-entry form will be available on WRHA website. Must be received no later than 7pm Sunday before the show to receive pre-entry discount.

► **Stall & Camping Reservations:** Link to stall & camping reservation form will be available on WRHA website. Shavings available for purchase on-site, or you may bring your own. Refer to "Know Before You Show" document for more information on camping.

► **Show Manager:** Butch Watson, (479) 644-1930, [barlquarterhorses@gmail.com](mailto:barlquarterhorses@gmail.com)

► **Show Secretary:** Dianna Watson, (479) 721-3969, [watsonhorseshows@gmail.com](mailto:watsonhorseshows@gmail.com)

**FRIDAY 12:00 PM**

**Arena #3**

**Ranch Reining (posted order of go)**

1. All Age Jr Horse Ranch Reining
2. All Age Sr Horse Ranch Reining
3. Amateur Ranch Reining
4. Novice Amateur Ranch Reining
5. Green as Grass Ranch Reining †
6. Youth Ranch Reining
7. 2 Year-Old Ranch Riding (after June 1<sup>st</sup>)

**Arena #2** - after Ranch Reining & 2 Y/O RR  
 \*\*\* not to start before 2pm\*\*\*

**Boxing (posted order of go)**

8. All Age Jr Horse Boxing \*
9. All Age Sr Horse Boxing \*
10. Amateur Boxing \*
11. Novice Amateur Boxing \*
12. Youth Boxing \*
13. Green as Grass Boxing ††

**SATURDAY 7:30 AM**

**Arena #2**

**Cattle Classes (posted order of go)**

14. All Age Cutting \*
15. Amateur Cutting \*
16. All Age Jr Horse Herd Work \*
17. All Age Sr Horse Herd Work \*
18. Amateur Herd Work \*
19. Youth Herd Work \*
20. Green as Grass Herd Work ††
21. All Age Ranch Roping \*
22. Amateur Ranch Roping \*
23. Novice Amateur Ranch Roping \*
24. Youth Ranch Roping \*
25. Green as Grass Ranch Roping ††
26. All Age Working Ranch Horse \*
27. Amateur Working Ranch Horse \*
28. Youth Working Ranch Horse \*
29. All Age Ranch Cutting \*
30. Amateur Ranch Cutting \*
31. Novice Amateur Ranch Cutting \*
32. Youth Ranch Cutting \*
33. Green as Grass Ranch Cutting ††

**Horsemanship (posted order of go)**

34. Walk Trot Restricted Horsemanship †
35. Amateur Horsemanship
36. Novice Amateur Horsemanship
37. Youth Horsemanship
38. Green as Grass Horsemanship †

**SATURDAY 8:00 AM**

**Arena #3**

**In-Hand Trail (working order w/ flexibility)**

39. Yearling In-hand Trail
40. Two year-old In-hand Trail

**Trail (working order w/ flexibility)**

41. Walk Trot Restricted Trail †
42. Green HORSE Trail †
43. Green as Grass Trail †
44. All Age Jr Horse Trail
45. All Age Sr Horse Trail
46. Amateur Trail
47. Novice Amateur Trail
48. Youth Trail

**Ranchmanship (working order w/ flexibility)**

49. All Age Jr Horse Ranchmanship
50. All Age Sr Horse Ranchmanship
51. Amateur Ranchmanship
52. Novice Amateur Ranchmanship
53. Youth Ranchmanship
54. Green as Grass Ranchmanship †

**SUNDAY 7:30 AM**

**Arena #2**

**Conformation**

55. Open 2 & Under Stallions
56. Open 3 & Over Stallions  
*Grand & Reserve Open Stallions*
57. Amateur 2 & Under Stallions
58. Amateur 3 & Over Stallions  
*Grand & Reserve Amateur Stallions*
59. Open 2 & Under Geldings
60. Open 3 & Over Geldings  
*Grand & Reserve Open Geldings*
61. Amateur 2 & Under Geldings
62. Amateur 3 & Over Geldings  
*Grand & Reserve Amateur Geldings*
63. Youth 2 & Under Geldings
64. Youth 3 & Over Geldings  
*Grand & Reserve Youth Geldings*
65. Open 2 & Under Mares
66. Open 3 & Over Mares  
*Grand & Reserve Open Mares*
67. Amateur 2 & Under Mares
68. Amateur 3 & Over Mares  
*Grand & Reserve Amateur Mares*
69. Youth 2 & Under Mares
70. Youth 3 & Over Mares  
*Grand & Reserve Youth Mares*
71. Green as Grass Conformation †

**Showmanship (posted order of go)**

72. Amateur Ranch Showmanship
73. Novice Amateur Ranch Showmanship
74. Youth Ranch Showmanship
75. Green as Grass Ranch Showmanship †
76. 10 & Under Ranch Showmanship †
77. Lead Line 10 & Under † (free, cannot enter any other classes)

**Walk-Trot**

78. Walk Trot 10 & Under †
79. Walk Trot 18 & Under †
80. Adult Walk Trot †
81. Walk Trot Restricted †

**Ranch Riding**

82. Green HORSE Ranch Riding †
83. All Age Sr Horse Ranch Riding
84. Amateur Ranch Riding
85. All Age Jr Horse Ranch Riding
86. Novice Amateur Ranch Riding
87. Youth Ranch Riding
88. Green as Grass Ranch Riding †

Fees:	Pre-Entry:	Post-Entry:
ARHA (All Age, Am, Nov Am)	\$26	\$31
GAG, GH	\$26	\$31
ARHA (Youth)	\$21	\$26
or \$180 Youth flat weekend fee (includes office & ARHA fees but NOT cattle or stall); no pre-entry discount		
Walk Trot	\$21	\$26
10 & Under	\$11	\$16
Lead Line	No Fee	
Trail Practice	No Fee	
Cattle Fee	\$36/class (in addition to class fee)	
Stalls	\$90/weekend or \$36/day	
Jump Out	\$21/day (if no stall is reserved)	
Camping Hook-Up	\$36 per night	
Office Fee	\$21/horse	
ARHA Fee	\$22/horse (only applies to horses showing in ARHA classes)	

**Announcements made day-of show take priority over show bill**

**www.WisconsinRanchHorse.com**



# Wisconsin Ranch Horse Association

## ► 2026 Know Before You Show ◀



2026-2027 ARHA Rulebook

- 1) WRHA membership is **required** for all horse owners & exhibitors to exhibit at any WRHA show.
- 2) ARHA membership is **required** for all horse owners & exhibitors showing in ARHA-sanctioned classes. ARHA certificate of eligibility is **required** for horses showing in ARHA-sanctioned classes. Must provide copy at time of entry. Note: Green As Grass (GAG), Green Horse (GH), Walk/Trot, and 10 & under classes are exempt from ARHA membership & registration requirements.
- 3) ARHA registry is open to all western-type breeds. You may join ARHA, register, & show your horse the same day (bring copies of front & back of breed registry papers). Applicable ARHA fees will apply, including rush fees for each membership and registration. Refer to ARHA Rule Book for more information.
- 4) Current negative EIA (Coggins) is required for all horses. Copy to be provided to show office. If the Coggins lists a current home premises of equine outside of Wisconsin, then the horse is considered an "out of state horse." All out of state horses **MUST** show a Certificate of Veterinary Inspection (CVI), dated within 30 days of the show, at show office. This is required by ATCP 10.36.
- 5) All classes are judged according to ARHA rules. Refer to the ARHA rulebook for more information. Judge's decision is final.
- 6) Exhibitors must show in traditional western attire in all classes, including boots, long-sleeved shirt, hat/helmet, & jeans. Refer to the ARHA Rule Book for more information.
- 7) No fake tails, banded manes, or hoof polish allowed. Judged on natural appearance & movement. Refer to the ARHA Rule Book for more information.
- 8) All youth classes are 18 & under as of January 1, 2026.
- 9) **Walk Trot Restricted:** No ARHA points awarded. Horse/exhibitor combination cannot enter any canter classes.
- 10) **Green As Grass (GAG):** No ARHA points awarded. These classes are for Amateur & Youth in their 1st, 2<sup>nd</sup>, & 3<sup>rd</sup> calendar year of showing in walk/trot/lope classes in ANY club or organization. All horses must be ridden in legal ARHA tack (no training equipment). Horses may be ridden one or two-handed. Exhibitors are no longer eligible for GAG if they have won a Year End High Point or Reserve High Point in GAG or any other division.
- 11) **Green Horse (GH):** No ARHA points awarded. The purpose of these classes is to give horses new to the show world an opportunity to compete against horses of similar experience levels. Eligible to horses of any age in their 1<sup>st</sup> calendar year of being shown under saddle in walk/trot/lope classes. Horses that have previously shown in-hand or in walk-trot classes are eligible. Open to Youth, Amateur, or Open riders. All horses must be ridden in legal ARHA tack (no training equipment). Horses may be ridden one or two-handed. May cross-enter into other appropriate divisions. Horses are no longer eligible for Green Horse after they have shown WRHA walk/trot/lope classes for 1 show year.
- 12) Camping is available on the show grounds. Show grounds may be shared with other associations. Specific camping spots **WILL** be assigned to board members & show staff. If you park/camp in a spot assigned to someone else, you **will** be required to move. Please check with show office or a WRHA board member prior to parking your camping vehicle.
- 13) WRHA offers an Awards Program, including Weekend & Year-End awards. Please refer to the **WRHA Awards Program** document on the WRHA website for more information.



# Wisconsin Ranch Horse Association

## 2026 Awards Program

### General Rules

- Horse owners & exhibitors must all be current WRHA members in good standing to be eligible for any awards (weekend or year-end). Points will not count toward weekend or year-end awards until WRHA membership dues have been paid.
- Points for All Age (Jr. Horse & Sr. Horse) accumulate on the horse. Points for all other divisions accumulate on the horse/exhibitor combination.
- WRHA points follow the ARHA point scale for all awards. See Section H-13 & 14 of ARHA rulebook.

### Weekend Division High Point

#### ▶ New for 2026: All Age division is split into Jr. Horse & Sr. Horse

- Awards given to 1<sup>st</sup> & 2<sup>nd</sup> highest point-earners in each division. Exhibitors **MUST** show in a cattle class in that division to be eligible. Divisions include All Age Jr. Horse, All Age Sr. Horse, Amateur, Novice Amateur, Youth, & Green As Grass.

### Year-End Class Awards

- Awards given to 1<sup>st</sup>, 2<sup>nd</sup> & 3<sup>rd</sup> highest point-earners in each class. Must earn at least one (1) point in the class to receive the award. Must show in the class at a minimum of three (3) of the four (4) WRHA shows to qualify.
- Points will be awarded based on class placings. For Conformation classes, points earned in Grand & Reserve will also be included (Grand receives 2 points, Reserve receives 1 point).

### Year-End Division High Point

#### ▶ New for 2026: All Age division is split into Jr. Horse & Sr. Horse

- Awards given to 1<sup>st</sup>, 2<sup>nd</sup> & 3<sup>rd</sup> highest point-earners in each division. **MUST** show in a cattle class at three (3) of the four (4) WRHA shows in that division to be eligible. Divisions include All Age Jr. Horse, All Age Sr. Horse, Amateur, Novice Amateur, Youth, & Green As Grass.

### Year-End Top Cow Horse (TCH)

#### ▶ New for 2026: All Age division is split into Jr. Horse & Sr. Horse

- Awards given in All Age Jr. Horse, All Age Sr. Horse, & Amateur divisions to the 1<sup>st</sup> & 2<sup>nd</sup> highest point-earners in all cattle classes in those divisions. Classes include Boxing, Cutting, Herd Work, Ranch Roping, Working Ranch Horse, & Ranch Cutting. Must show at three (3) of the four (4) WRHA shows in that division to be eligible.

### Year-End Top Performance Horse (TPH)

#### ▶ New for 2026: All Age division is split into Jr. Horse & Sr. Horse

- Awards given in All Age Jr. Horse, All Age Sr. Horse, & Amateur divisions to the 1<sup>st</sup> & 2<sup>nd</sup> highest point-earners in all non-cattle classes. Classes include Ranch Reining, Horsemanship, Trail, Ranchmanship, Conformation, Showmanship, & Ranch Riding. Must show at three (3) of the four (4) WRHA shows in that division to be eligible.

### For All Year End Awards...

- In the case of a tie, ties will be broken by the following order: the highest number of points earned in those classes under Judge A at the four (4) WRHA shows, most number of 1<sup>st</sup> places, most number of 2<sup>nd</sup> places, etc.



# Youth Sponsorship Program

**OBJECTIVE OF PROGRAM:** This program is for any youth that feel they would benefit from individual lessons with a professional trainer. We are asking youth to show their dedication and desire to be a part of this program by going out and raising money for lessons through sponsorships.

**ELIGIBILITY:** This program is open to all youth who have actively shown with WRHA in the past one or two years (either 2024 and/or 2025) and have a current 2026 WRHA membership.

**HOW IT WORKS:** Youth are asked to go out and obtain sponsorship money which WRHA will match dollar-for-dollar up to \$150. **Example:** If you obtain \$150 in sponsorships, **WRHA will add \$150, so a total of \$300 is available.** Money is to be used for lessons provided by one of the participating trainers on our list. Sponsorship money can be solicited from businesses, friends, family, etc. and is to be paid directly to WRHA. **This program is available to the first 15 youth who submit their sponsorship forms.**

The youth member will be responsible for their own transportation and setting up dates/times for lessons directly with the trainer. List of dates/times of lessons to be provided to WRHA who will then coordinate payment direct to the trainer. **All lessons must be completed by November 1, 2026.**

**PARTICIPATING TRAINERS:** A list of participating trainers is attached. Trainers on this list are well-versed in ranch shows/classes and have committed to the rules of this program; some are ARHA judges. We have tried to provide a variety of locations in Wisconsin and northern Illinois to accommodate as many youth as possible.

X

\_\_\_\_\_  
Youth Name & Date

X

\_\_\_\_\_  
Parent/ Legal Guardian (if under 18) & Date

X

\_\_\_\_\_  
Sponsor Name & Date

**Please send your completed forms to:**

**Sarah Lidicker  
N5422 Dunning Rd.  
Pardeeville, WI 54954**

Sponsorship Amount: \$



## Youth Sponsorship Program

### PARTICIPATING TRAINERS LIST

These trainers have agreed to participate in the 2026 WRHA youth lesson program providing up to 6 private sessions at the rate of \$50 per session)

NAME	LOCATION	PHONE NUMBER
TAWNEY DENN	HARVARD, IL	847-863-6654
NATALIE DERRY	JEFFERSON, WI	920-723-9131
DAN GRUNEWALD	JEFFERSON, WI	262-853-3249
JUDY GUENTHER	BRANDON, WI	920-346-8344 or 920-960-1953
PAUL HUETTL	WEST BEND, WI	262-707-4738
KRYSTAL KOEPP	POYNETTE, WI	608-575-5506
AMY MARX	WONDER LAKE, IL	608-797-2973

**\*\* Each youth participant is responsible for setting up training sessions directly with their trainer of choice. Once lessons are completed, WRHA will provide payment direct to the trainer.**



## Youth Sponsorship Program

### Lesson Check-Off

**INSTRUCTIONS:** Please complete the check-off list providing the following information: Date of Lesson, Location of Lesson, Trainer Name, Trainer Signature, Youth Signer & Parent/Guardian Signature (if under 18 years of age). WRHA will provide payment to the trainer once the check-off form is completed & sent to WRHA.

The youth member will be responsible for their own transportation & setting up dates/times for lessons directly with their selected trainer. List of dates/times of lessons are to be provided to WRHA who will then coordinate payment directly to the trainer. All lessons must be completed by November 1, 2026.

**Please send your completed check-off form to:**

Sarah Lidicker  
N5422 Dunning Rd.  
Pardeeville, WI 54954



# YOUTH SPONSORSHIP      Youth Name:

## PROGRAM LESSON

### CHECK OFF

Lesson Number	Date of Lesson	Location of Lesson	Trainer Name	Trainer Signature	Youth Signature	Parent/ Guardian Signature
1.				X _____	X _____	X _____
2.				X _____	X _____	X _____
3.				X _____	X _____	X _____
4.				X _____	X _____	X _____
5.				X _____	X _____	X _____
6.				X _____	X _____	X _____